

BREATHE WELL BREATHE SAFE

Powered by nano ions PuriPRO® / HepaPRO™ Filter

AIR PURIFIER
A8.

puriPRO® | hepaPRO™

1ST NANOION
H13 HEPA FILTER IN SINGAPORE

Ag
Silver 107.868

Cu
Copper 63.546

MORE THAN 99.99% ACTIVE VIRUS & BACTERIA ELIMINATION IN 60 MINS



Cu²⁺

Ag⁺

KEY FEATURES NANO SILVER + COPPER IONS

HIGHLY REACTIVE | >99.99% ACTIVE ELIMINATION | NO HARMFUL BY-PRODUCTS

Being the **HIGHEST CAPACITY** unit, A8 is equipped with a dual suction vent, and featuring an outstanding **CADR-Smoke rating of 1,142 m³/hr**. Well-equipped to cover an extensive area of up to 2,303 ft², A8 is the perfect unit for your entire home, clinics, childcare centres, workplace and more to effectively eliminate airborne allergens and germs by its nano ions PuriPRO®/HepaPRO™ H13 HEPA filtration system.



HIGH CAPACITY

CLEAN AIR
CADR 1142 m³/h
SMOKE
DELIVERY RATE

Advanced SEMI-PERMANENT BUILT-IN IONIZER
• PRODUCE UP TO 60 MILLION NEGATIVE IONS

Advanced DE BRUSHLESS MOTOR SYSTEM
• NOW COMES WITH 3 YEAR WARRANTY ON MOTOR

puriPRO hepaPRO	
ACTIVE ELIMINATION EFFICACY	
>99.99%	PM2.5 RESPIRATORY SUSPENDED PARTICULATES within 1 min
>99.99%	NATURAL AIRBORNE BACTERIA within 5 mins
>99.99%	TOTAL AIRBORNE YEAST & MOLD within 5 mins
>99.99%	AEROSOLIZED ESCHERICHIA COLI within 60 mins*
>99.99%	AEROSOLIZED STAPHYLOCOCCUS ALBUS within 60 mins*
>99.99%	AEROSOLIZED INFLUENZA A (H1N1) within 60 mins*

MORE FEATURES



DUAL SUCTION VENT

1142 m³/hr

CADR SMOKE

2,303 ft²

EXTENSIVE COVERAGE

FIR PM2.5

MOVING AVERAGE PM2.5 DISPLAY



AIR QUALITY SENSOR LIGHT



3 PROGRAMMED MODES



5 SPEED SETTINGS



ENERGY SAVING SMART NIGHT MODE



SMART FILTER DIAGNOSIS



FILTER REPLACEMENT INDICATOR



novita
AIR • WATER • BODY

5-STEP FILTRATION SYSTEM



STEP 1: WASHABLE MESH FILTER*

Washable mesh filter provides the first layer of air filtering system by capturing larger particles to improve the durability and enhance performance of subsequent filters.

FUNCTION • Trap large particles such as hair, scurf, coarse particulates and fine dust present in the air.

STEP 2: COOL CATALYST FILTER^o

Cool catalyst filter produces reactive oxidants to oxidize and eliminate airborne germs and harmful volatile organic compounds (VOCs). This reaction breaks down the contaminants into carbon dioxide and water molecules under normal room temperature environment.

FUNCTION • Oxidize and eliminate airborne germs and harmful volatile organic compounds (VOCs).

STEP 3: GRANULAR ACTIVATED CARBON FILTER^o

Granular Activated Carbon removes unpleasant odours and chemicals in the air with its highly adsorbent granules. Each granule contains millions of microscopic pores to provide a large surface area capacity to absorb volatile organic compounds (VOCs), unpleasant odour and airborne chemicals.

FUNCTION • Absorb volatile organic compounds (VOCs), unpleasant odour and airborne chemicals.

STEP 4: H13 HEPA FILTER ENHANCED WITH NANO SILVER COPPER IONS^{o*}

H13 HEPA filter is equipped with 99.97% filtering efficiency against airborne allergens and germs with a size of 0.3 micrometre in diameter. This includes very fine dusts, haze and smoke particulates, pet dander, mold spores, pollen, bacteria and virus. And through the infusion of a synergistic blend of nano silver (Ag⁺) and copper (Cu²⁺) ions into the H13 HEPA filter fibres, these nano ions conduct direct sanitization of the virus and bacteria trapped in the HEPA filter, assuring only clean filtered air leaves the air purifier. This serves as an additional protection measure against any potential virus/bacteria transmission or secondary pollution.

FUNCTION

- Trap up to 99.97% of airborne allergens and germs such as fine dusts, haze and smoke particulates, pet dander, mold spores, pollen, some bacteria and viruses.
- The nano silver (Ag⁺) and copper (Cu²⁺) ions conduct active elimination of virus and bacteria trapped in the HEPA filter via adhesion, penetration, and oxidative damage.

STEP 5: BUILT-IN IONIZER (SEMI-PERMANENT)*

Semi-Permanent Built-in Ionizer produces millions of negative ions to promote air purification through the elimination of airborne allergens and germs. Negative ions also help to freshen up the air quality.

FUNCTION • Eliminate airborne allergens and germs such as pollen, dust mites, pet dander, mold spores, bacteria, fungi and viruses.

- Freshen up air quality.

^o Cool Catalyst Filter, Granular Activated Carbon Filter and H13 HEPA Filter are combined as a single PuriPRO[®] / HepaPRO[™] filter unit.

* Applicable for HepaPRO[™] Filtration System.

BREATHE WELL BREATHE SAFE

Powered by nano ions PuriPRO[®] / HepaPRO[™] Filter

H13 HEPA filter is well-known for its high filtration efficiency of trapping and removing 99.97% of airborne allergens and germs with a size of 0.3 micrometre in diameter. Besides the four primary trapping mechanisms - DIFFUSION, INTERCEPTION, INERTIAL IMPACTION, AND ELECTROSTATIC ATTRACTION, the HEPA Filter is now also enhanced with active elimination of virus and bacteria properties.

Through the infusion of a synergistic blend of nano silver (Ag⁺) and copper (Cu²⁺) ions into H13 HEPA filter fibres, these nano ions conduct direct sanitization of the virus and bacteria trapped in the HEPA filter, assuring only clean filtered air leaves the air purifier. This serves as an additional protection measures against any potential virus/bacteria transmission or secondary pollution.

puriPRO[®] | hepaPRO[™]



MORE THAN 99.99% ACTIVE VIRUS & BACTERIA ELIMINATION IN 60 MINS



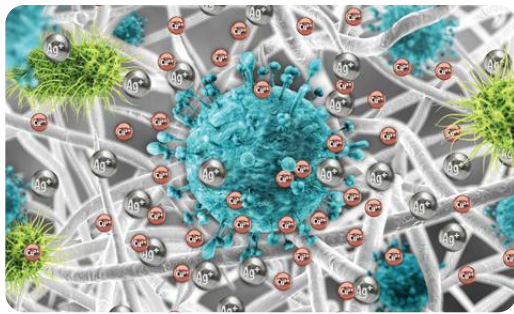
KEY FEATURES NANO SILVER + COPPER IONS

HIGHLY REACTIVE | >99.99% ACTIVE ELIMINATION | NO HARMFUL BY-PRODUCTS



EMISSION OF NANO SILVER AND COPPER IONS

Elimination of the virus and bacteria at molecular level via direct sanitization with the following 3 Steps - Adhesion, Penetration and Oxidative Damage.

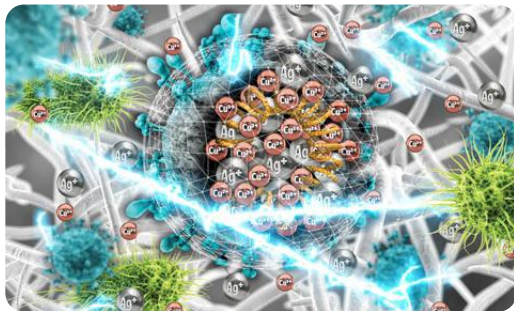


STEP 01: ADHESION

The primary target of attack is the bacteria cell wall and virus protein coat due to the presence of highly electronegative chemical groups (e.g., peptidoglycan, phospholipid, teichoic or teichuronic acids, and lipoteichoic acid groups) that serves as sites for absorption of nanoscale positively charged silver and copper ions.

The adhesion of these ions will result in the following reactions

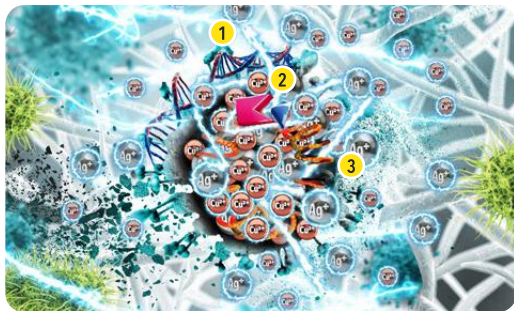
Alters Membrane Structure And Permeability | Cause Leakage Of Cellular Content And ATP | Impair Cellular Transport Activity



STEP 02: PENETRATION

These nano Silver (Ag^+) and Copper (Cu^{2+}) ions puncture and break down the cell membrane of the bacteria and coating of a virus, then penetrate the organism to further damage it by disrupting the biomolecules and cause intracellular damage.

Induce Lipid Damage | Leakage Of Cellular Biomolecules | Inhibition Of Respiration



STEP 03: OXIDATIVE DAMAGE

The Silver (Ag^+) and Copper (Cu^{2+}) ions that penetrated the cell and nucleus develops intracellular destruction of the following cellular oxidative stress, deactivate the essential enzyme and leads to rapid DNA/RNA destruction. These activities collective reactions eventually eliminate the bacteria and virus thoroughly.

- 1 Deactivate The Essential Enzyme
- 2 Destabilize And Denature Proteins And Ribosomes
- 3 Interact And Inactivate DNA/RNA

NOTE:• The microorganisms are magnified for better illustration purposes and are not in actual proportion to the filters and nano ions.
• Filter image and nano ions shown are non-contractual image meant solely for better illustration purposes only.

BACKED WITH PROVEN EFFICIENCY TESTED BY ACCREDITED LABORATORY

ESCHERICHIA COLI (AEROSOLIZED)



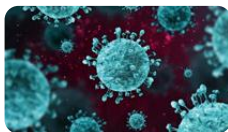
>99.99%
Eliminate Within
60 Mins*

STAPHYLOCOCCUS ALBUS (AEROSOLIZED)



>99.99%
Eliminate Within
60 Mins*

INFLUENZA A (H1N1) (AEROSOLIZED)



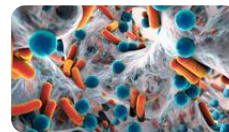
>99.99%
Eliminate Within
60 Mins*

PM2.5 RESPIRATORY SUSPENDED PARTICULATES



>99.99%
Eliminate Within
1 Min

NATURAL AIRBORNE BACTERIA



>99.99%
Eliminate Within
5 Mins

TOTAL AIRBORNE YEAST AND MOLD



>99.99%
Eliminate Within
5 Mins

All tests are conducted in specific conditions for testing analysis and measurement purposes. Actual result may vary due to environmental and usage conditions.
*Bacteria and virus tests are conducted based on H13 HEPA Filter enhanced with Nano Silver Copper Ions.

SPECIFICATIONS

Voltage	220-240 V				
Frequency	50/60 Hz				
Speed Setting	Sleep	Low	Medium	High	Turbo
Power Consumption	9 W	17 W	43 W	60 W	66 W
Air Flow Rate	300 m³/hr	520 m³/hr	880 m³/hr	1,000 m³/hr	1,070 m³/hr
Recommended Coverage ^o	645 ft²	1,119 ft²	1,894 ft²	2,152 ft²	2,303 ft²
Noise Level	≤ 65.9 dB				
CADR - SMOKE [□]	1142 m³/hr				
Net Weight	14 Kg				
Dimension (W x D x H)	405 mm X 402 mm x 695 mm				

Filtration System	PuriPRO®/HepaPRO™™ Step 01: Washable Mesh Filter* Step 02: Cool Catalyst Filter Step 03: Granular Activated Carbon Filter Step 04: H13 HEPA Filter* Step 05: Semi-Permanent Built-In Ionizer*
Filter Unit Capacity ^Δ	2 x PuriPRO® / HepaPRO™™ Filter Suggested Replacement 24 Months (Approx. 9,000 hours ^Δ)
Negative Ion Density ⁺	Up to 60 Million/cm³
Colours Available	Rose Gold ● Slate Black ●

◊ The recommended coverage area is based on normal domestic indoor environment usage.

□ The clean air delivery rate (CADR) in terms of smoke removal is performed in accordance to AHAM-AC-1-2015 Standard, based on novita HepaPRO™ filter.

Δ Based on average excellent indoor air quality, 12 hours a day, 7 days a week usage under normal domestic indoor environment.

+ Negative ion density measured is based from source emission.



LEARN MORE